



# **Bragança**

## **An Opportunity for the Future**



**Bragança**  
Município

# Do you know Bragança?

Bragança is a dynamic, attractive and modern city with well-organized institutions and competitive companies, as well as higher education institutions of quality. Along with great accessibilities, public facilities are excellent. The fact that there is a great percentage of highly qualified young people makes the city more attractive and able to face the demands of the global and competitive economy.

Bragança is a safe city, with well-equipped green spaces, a lively nightlife and with agricultural food produce of excellence.

According to a study by DECO (consumer protection), Bragança was considered the sixth city with the highest quality of life in Portugal, being awarded very positive evaluation in terms of housing, mobility, crime, noise, restaurants, supermarkets, culture, leisure and sports.

Every year Bragança has been awarded the Green Flag reflecting its focus on sustainability and environmental education.

# At a glance

Area | 1,173km<sup>2</sup>

Population | 30,1 people per km<sup>2</sup>

Inhabitants | 23,099 people

People living in the municipality | 35,341 people

Unemployed people | 1,715

Visitors in the municipal tourism office | 27,398 tourists

Green spaces | 19,18m<sup>2</sup>/ pax

Public transportation | 11 lines

Shopping Centre | 1

Large supermarkets | 4

Capacity of tourism accommodation | 1,501 beds

Camping sites | 3

Urban bicycle network | 8 kms



Street Art | Bordalo II



# BRAGANÇA

Lat 41°80'62.05" N  
Lon 06°76'50.54" W



# Accessibilities

Bragança has good road networks, ensuring safety in the circulation and rapid access to the destination.

The proximity to the Spanish high-speed Rail Station, connected to La Coruña -Madrid which stops at the Zamora station, opened in November of 2015, allowing the connection to Madrid in only 1h20m, contributes to additional mobility and development.

Bragança has a regional airport with regular flights between Bragança - Vila Real - Viseu - Lisbon and Portimão (Algarve). The Oporto Airport is less than 2 hours away and the Madrid Airport is 3 hours away.

Bragança is in the middle of the two biggest seaports of the Iberian Peninsula, Leixões (Portugal) and Bilbao (Spain).

Distances | Time

**Lisbon** 491 Km | 04h15m

**Oporto** 215 Km | 02h00m

**Madrid** 362 Km | 03h15m

**Zamora** 90 Km | 01h00m

**Salamanca** 169 Km | 01h45m

# Economic activity

In a decade, the purchasing power has increased 7.25 percentage points (pp), while the average in the Northern Region increased 1.58 pp. Since 2000, Bragança is above the average of the Northern Region and, in 2005, it was above the country's average.

In the last decade businesses have become more competitive and gained exportation dimension. In the year 2000 Bragança represented 0,14% of the Northern Region exportations, reaching 1,59% in 2003.

In 2003 Bragança has exported three times more than the Douro NUT, six times more than the rest of the municipalities of the Alto Trás-os-Montes NUT and 74.53% of the 33 municipalities that are part of both NUTs (Douro and Alto Trás-os-Montes). This shows the consolidation of Bragança's regional leadership and attraction as well as its striving export activities.





# Get to know the Heritage

Bragança preserves an exclusive heritage in a compact Old Town that can be easily visited on foot. The worn-out stone of the Old Town are witnesses of the long history of the city, where the 15th century keep is highlights one of the most well preserved castles of Portugal. The citadel also houses a monumental set, which is truly worth visiting, such as the enigmatic Domus Municipalis. Beyond the walls of the castle, the roads guide the traveller along several churches. The Montesinho and Rio de Onor villages preserve buildings and traditions which deserve an attentive visit.



Castle of Bragança and Domus Municipalis



Outeiro Basilica



# Enjoy nature

The Montesinho Natural Park which is located in the entrance of Bragança has a unique biodiversity. It contains 80% of the mammals that exist in Portugal. The fabulous landscapes are composed by rounded hills and valleys fitted in the Sabor, Maças and Baceiro Rivers. This natural phenomenon forms several paths that allow people to go for a walk or to practise ATB as well as to take up St. James' Path and the Roman Antonine Itinerary.



St. James' Path



Montesinho Natural Park





Graça Morais Contemporary Art Centre



Careto



Living Science Centre



Abade de Baçal Museum

# Get to know the Culture

In Bragança, the route towards the future is strongly settled in traditions with millenarian origins. This dynamic city has an eclectic cultural offer, along with a contemporary architecture that lives with parades of caretos (traditional masked young men). The museums exhibit the ethnographic heritage of the region as well as the latest creations of renowned artists.

Municipal Theatre of Bragança

Graça Morais Contemporary Art Centre

Living Science Centre

Music and Dance Conservatory

Adriano Moreira Municipal Library

Georges Dussaud Photography Centre

Iberian Museum of Masks and Costumes

Abade de Baçal Museum

Military Museum

Forte S. João de Deus Memory Centre

Interpretation Centre of the Sephardi Culture

Belarmino Afonso Ethnographic Museum

Concerts, conferences, colloquiums, workshops, exhibitions, shows and street gigs happen all the time.



# Education

Bragança has high-quality teaching infrastructures and innovative technologies which are favourable to learning. Some schools have extended opening hours from 7h45am to 7h30pm.

Public School System (close to the industrial area < 8km)

Kindergartens | 6 with 307 children and capacity up to 450.

1st Cycle of Basic Education | 11 with 822 students and capacity up to 1288.

2nd and 3rd Cycles of the Basic and Secondary Education | 4 with 2,502 students and capacity up to 3,530.



Secondary Education



Polytechnic Institute of Bragança

# Education

## **Private School System** (close to the industrial area < 8kms)

Monthly costs between 35€ and 195€, according to the per capita income.

Nurseries | 8 with 256 children and capacity up to 288

Kindergartens | 8 with 461 children and capacity up to 540.

1st Cycle of Basic Education | 3 with 245 students and capacity up to 300.

## **Higher and Professional School System**

2 professional schools (1 public and 1 private)

The Polytechnic Institute of Bragança comprises five schools offering a total 52 degrees and about 7,000 students. It is a very multicultural institution with around 1,200 students doing a mobility programme in one of its five schools: School of Education, School of Agricultural Sciences, School of Technology and Management, School of Health Sciences and School of Communication, Administration and Tourism.

In Bragança there are several entities where people can learn and improve foreign languages (Spanish, English, French and German), as well as learn Portuguese for Foreigners.

# Sports

Bragança has high-quality sports infrastructures that allow the practice of many activities such as football, basketball, hockey, dance, swimming, martial arts, etc. All of these together with sports teams and companies make Bragança healthier.

2 swimming pools (1 outdoor and 1 indoor heated)

5 covered sports pavilions

3 sports pitches with natural and synthetic grass

4 outdoor gym parks

3 extreme sports parks

5 Children parks

4 gyms

1 equestrian centre

9 outdoor sport centres

Throughout the year more than 20 walking and hiking events take place. Bragança has excellent conditions for the practice of ATB and running or jogging.



Public swimming pools



Leisure park



Extreme Sports Park



# Health

**1 Hospital** (with specialised care in: General Medicine, Anaesthesiology, Cardiology, General Surgery, Stomatology, Gastroenterology, Gynaecology/ Obstetrics, Physical and Rehabilitation Medicine, Intensive Care Medicine, Internal Medicine, Neurology, Nephrology, Nutritionism, Ophthalmology, Oncology, Orthopaedics, Otolaryngology, Paediatrics, Neonatology, Pneumology, Clinical Psychology, Psychiatry, Child and Adolescence Psychiatry, Urology, Public Health)

**3 Health Centres**

**1 Palliative Care Unit**

**1 Long-term Mental Health Care Unit**

**1 Long-term Health Care Unit**

**Several Private Clinics with different specialties**

**98,5% of Bragança's population has a family doctor and family nurse.**

Bragança also has a cohesive social network, including several social responses that provide a more efficient answer to needs.



Long-term Health Care Unit



Bragança Hospital

# Support services

Bragança is a balanced territory and a centre of competencies and knowledge, including regional and other decentralised services.

Bragança's Courthouse

Land, Commercial and Civil Conservatory

Regional Social Welfare Centre

Fiscal Authorities (Tax and Customs departments)

Portuguese Institute of Sports and Youth

INATEL (tourism and leisure institute)

IAPMEI (Institute of Support to Small and Medium Sized Companies)

Business Association of Bragança (NERBA)

Industrial, Commercial and Services Association Bragança (ACISB)

Agriculture and Fishery Regional Administration

Conservation of Nature Institute

Public Security Police

Republican Law Enforcement

Bragança Fire department

Immigration and Borders Service

Working Conditions Authority

# Accommodation

Bragança has a good internal road network and a diverse and high-quality accommodation offer.

The city is fully equipped by water supply, disposal of sewage and waste, public gas supply and optical fibre that comprises residential and industrial areas.

Estimated costs of accommodation (rent and sale)

T0 | 190€/month – 55,000€

T1 | 235€/month – 62,000€

T2 | 280€/month – 68,000€

T3 | 320€/month – 85,000€

T4 | 450€/month – 130,000€

Rooms | 100€ – 125€



Av. Forças Armadas



Alexandre Herculano Street



# Municipal Public Welfare

Bragança widely supports families in need living in the municipality, namely through:

- reduction of 70% of the water bill, sewage and waste as well as specific support to great numbered families;
- different levels for the payment of the local Bus company ticket;
- different levels for the payment of the public swimming pool use and in all the public cultural facilities;
- when the child benefit is either 1st, 2nd or 3rd level, Bragança supports students of the public school system with 100%, 50% and 25% in the following categories:

Pre-School Education: Meal - monthly costs of 31,18€ and extension of the school stay - monthly costs of 30,20€

1st Cycle of Basic Education: Meal - monthly cost of 32,12€ and mandatory textbooks

- for students who live up to 4km distance from the Pre-School and 1st Cycle of Basic Education, Bragança provides free transport.





# Higher Education

The Polytechnic Institute of Bragança (IPB) comprises five schools (School of Education, School of Agricultural Sciences, School of Technology and Management, School of Health Sciences and School of Communication, Administration and Tourism) offering Bachelor's and Master degrees as well as 2 year Specialized Technical Courses.

Besides teaching, this institution invests in Research activities and supports the community by providing services and life-long training.

The Polytechnic Institute of Bragança is a centre of creation, transmission and dissemination of culture, science, technology and art.



Polytechnic Institute of Bragança



# Professional School System

Bragança has an Employment and Professional Training Institute that manages several training courses, namely in field of informatics, electricity, electronics, personal services, restaurants and hotel management.

There is a professional school, the Escola Prática Universal which teaches accounting, building construction, tourism and commercial services.

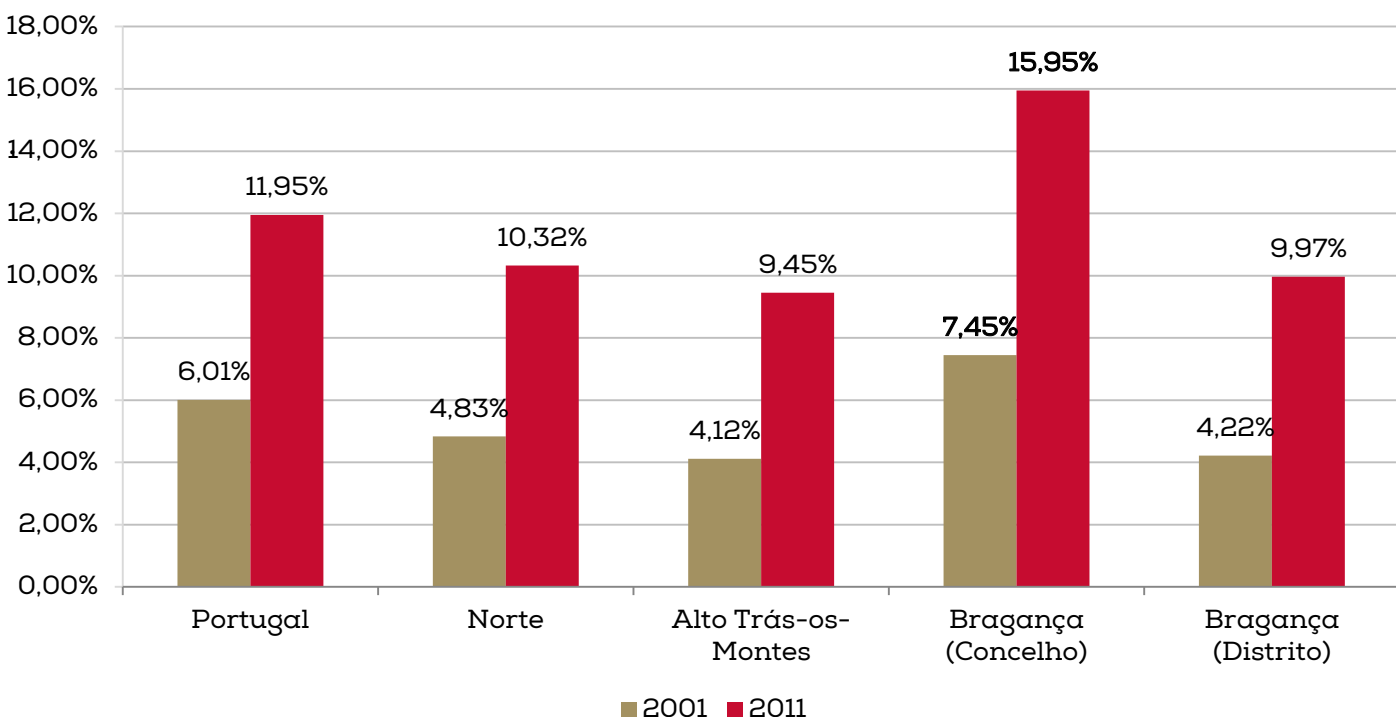


Employment and Professional Training Institute

# Schooling levels

From 2001 to 2011 the municipality of Bragança increased 8.5 percentage points (pp). Now it is 4.0 pp above the average of the Country, 5.6 pp above the average of the Northern Region, 6.5 pp above the average of Trás-os-Montes, 5.98 pp above the Bragança District, occupying the 13th position of all the 308 municipalities of Portugal. This is very important for its own development.

Schooling levels (Residents holding a bachelor Degree)



# Cooperation

The King Afonso Henriques Foundation has headquarters in Bragança and Zamora, thus developing an important role in the cross-border cooperation.

Bragança has a cooperation network with Spanish institutions such as the Salamanca University and the Valladolid University as well as with entities and confederations supporting the investment, innovation and entrepreneurship.



King Afonso Henriques Foundation | Zamora



# Automobile Industry Cluster

Clusters of the same industrial branch lead to competitive gains and more efficiency.

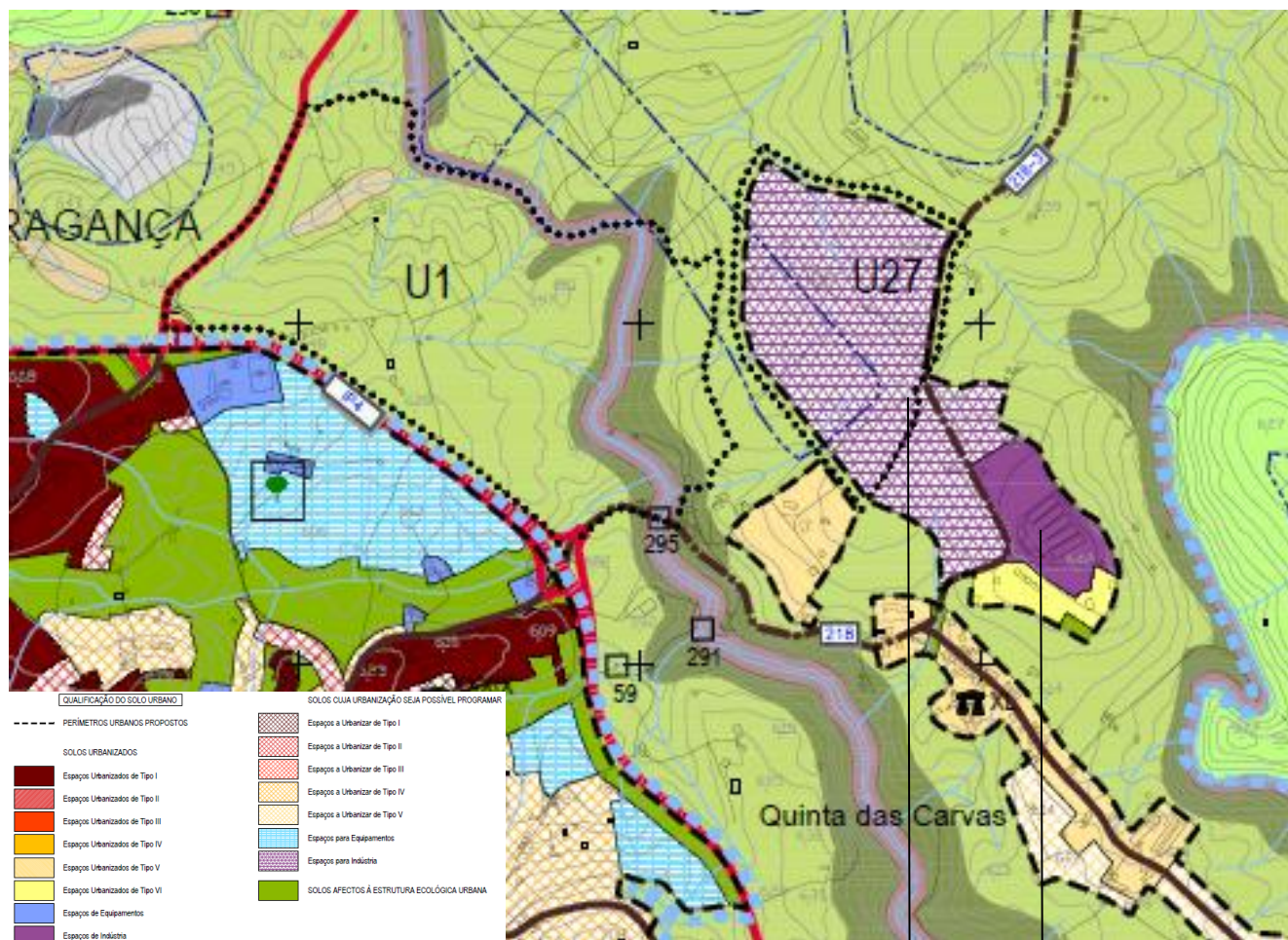
Bragança is potentiating the development of a cluster of the automobile industry, having Faurecia - Bragança as a reference. This company records a remarkable increasing in production, exportation and employees.

Faurecia - Bragança has nearly 750 employees, featuring high levels of quality and productivity as well as low levels of work absence.

Faurecia - Bragança has several sub-contractors of components installed in Bragança. For the time being two companies of foreign capital are being set up.



# Logistic Platform - BGR 2



Faurecia - Bragança

52 ha  
Space for industry

- Direct connection to the IP4/A4 highway
- Expanding Industrial Area
- 5 minutes away from Bragança
- Close to the water lines
- Close to the airport

# Brigantia Ecopark

The Brigantia Ecopark is a privileged area for science and technology supporting consolidated and incubated companies, both technology-based. Brigantia EcoPark also has lab areas to support research, development and innovation.

It develops its activity in three main thematic areas, without overlooking others that may be crucial for its development. The areas are: Energy, Environment and Eco construction. Brigantia EcoPark has a protocol with the "EDP Starter" Incubation Programme and "PT INOVAÇÃO"



Brigantia Ecopark





Município de Bragança  
Forte São João de Deus  
5300-263 Bragança  
+351 273 304 200

[www.cm-braganca.pt](http://www.cm-braganca.pt)

[facebook/municipiobraganca](https://www.facebook.com/municipiobraganca)